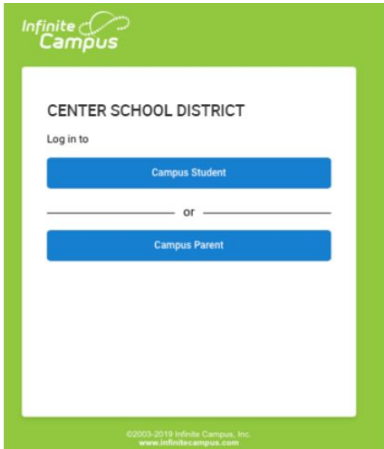


Updated Campus Parent

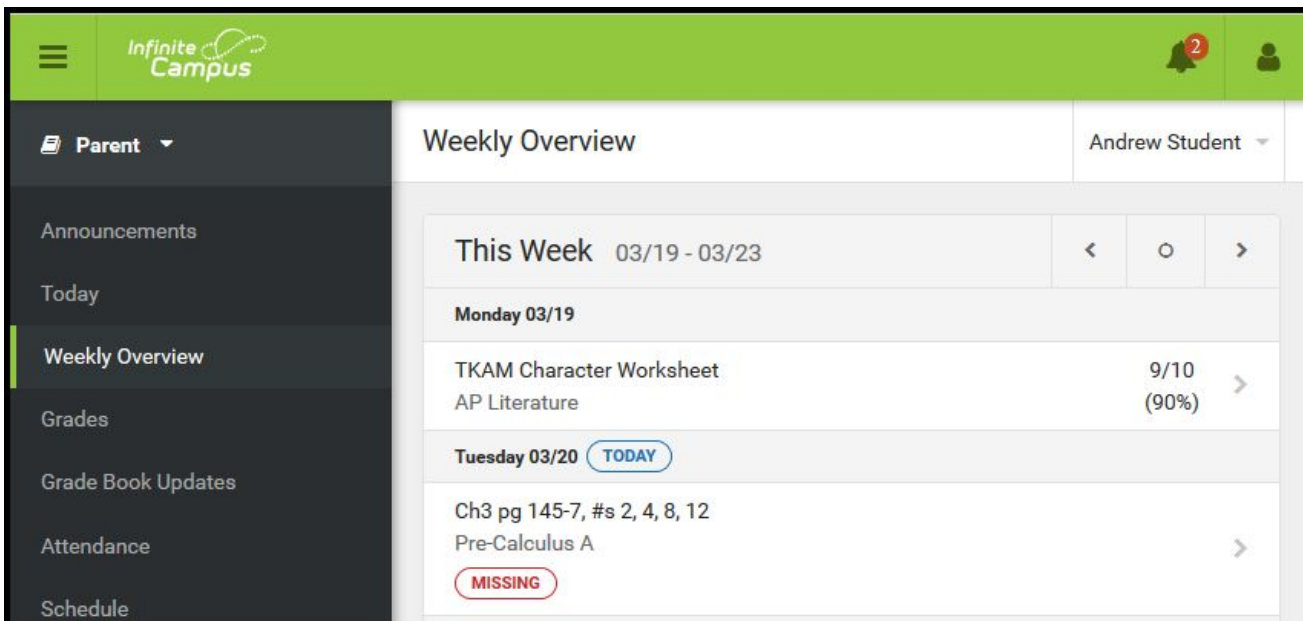
The Campus Parent Portal is a new version of the Campus Portal designed specifically for parents. It includes enhanced features to make it more useful, including a responsive design optimized for use on mobile devices and tablets.



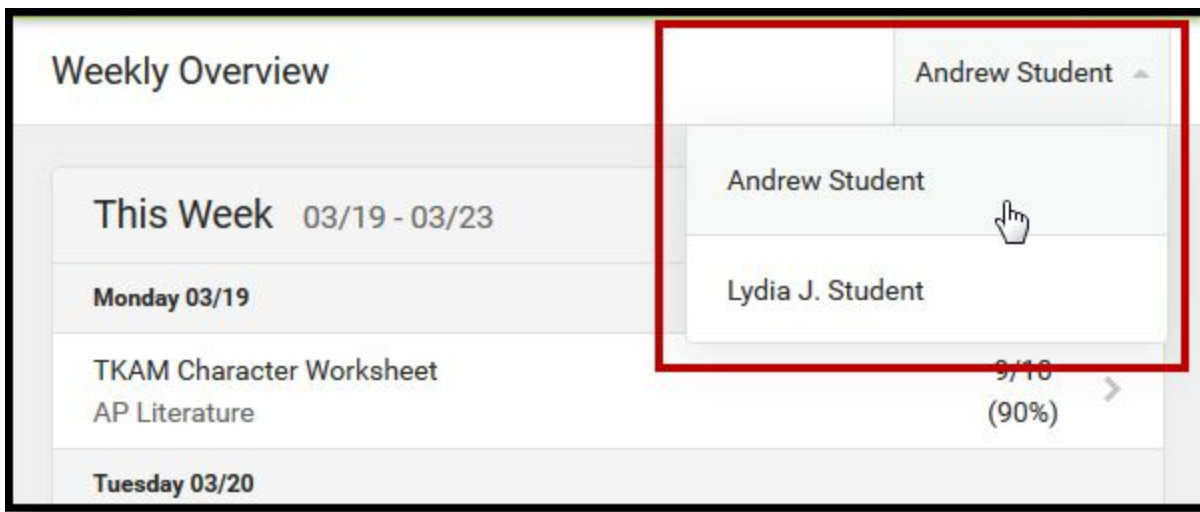
Using the Campus Parent Portal

In the Campus Parent Portal, navigate between tools in the menu on the left. On mobile devices, this menu shrinks to a "hamburger" or "three bars" icon to save space

Click the user icon in the top right to view Notification Settings. To switch to the previous Portal, click the Parent dropdown and select Portal.



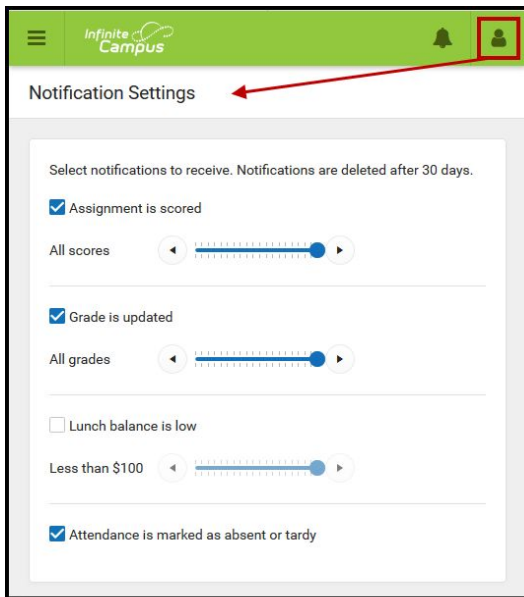
If a tool is specific to a single student, such as Grades or Schedule, a student drop down list displays in the top right corner. **This dropdown list does not display for tools that are not student specific like Announcements.**



Notification Settings

Notification settings allow users to opt out of receiving specific kinds of notifications and establish thresholds for those they want to receive. Set thresholds to only receive notifications when a grade or score falls below the selected percentage or a lunch balance falls below the selected dollar amount. Click the arrows to change the threshold or click and drag the dot.

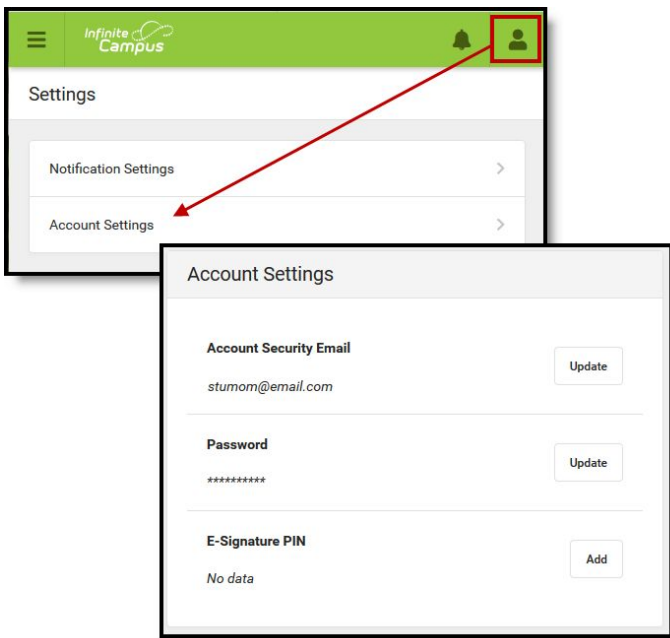
Notifications are not sent for any tools that have been disabled by the district. Only districts using Campus Food Service receive low balance notifications.



Account Settings

Account settings allow users to update their security email on record or to change their Password and E-Signature PIN.

- The Account Security Email is the email used if a user forgets their username or password.
- Passwords can only be modified if the district has enabled Password Reset. Strong passwords are enforced, meaning that passwords should have a mix of letters, number, and characters to make them more secure.
- E-Signature PINs are used to electronically verify and sign Meal Benefit Applications. This field is only available if enabled by the district.



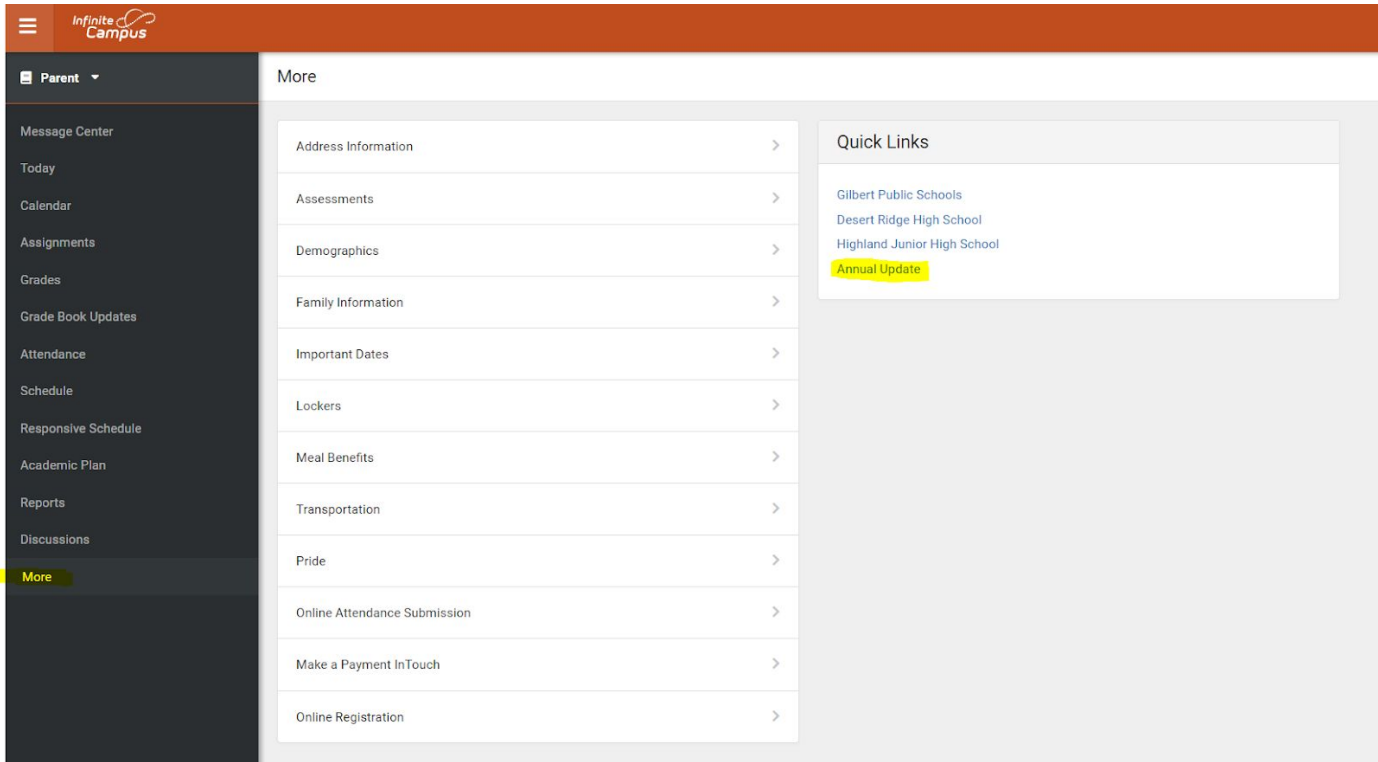
How to Access Annual Update

Click the Annual Update link found in the Message Center.

The screenshot shows the 'Message Center' interface. On the left is a dark sidebar with a 'Parent' dropdown and a list of navigation items: Message Center, Today, Calendar, Assignments, Grades, Grade Book Updates, Attendance, Schedule, Responsive Schedule, Academic Plan, Reports, Discussions, and More. The main content area is titled 'Message Center' and has two tabs: 'Announcements' (selected) and 'Inbox'. A 'District Announcement' is displayed, dated '07/30/2018'. It features a graphic with the school district logo and the text 'ANNUAL UPDATE' in large, glowing letters. Below the graphic is a red banner with the text 'IMPORTANT INFORMATION FOR PARENTS: It's time to update your student's emergency contact information on Infinite Campus'. The announcement text reads: 'We are excited to announce a new online version of our 'Annual Update' process. The 'Annual Update' allows you to tell us of any updates to your contact information, address changes, updates to emergency contacts, awareness contract, [and Chromebook agreement for grades 7-12](#). Every parent or guardian must complete the 'Annual Update' process.' Below this, it states: 'In order to ensure we can communicate with you regarding your student, or in case of emergency, it is essential that we have your up to date contact details. Below are instructions on how to complete the 'Annual Update' online using the Infinite Campus Parent Portal.' At the bottom, there is a blue link: 'Please click here to complete your Annual Update / Awareness Contract / Chromebook Agreement'.

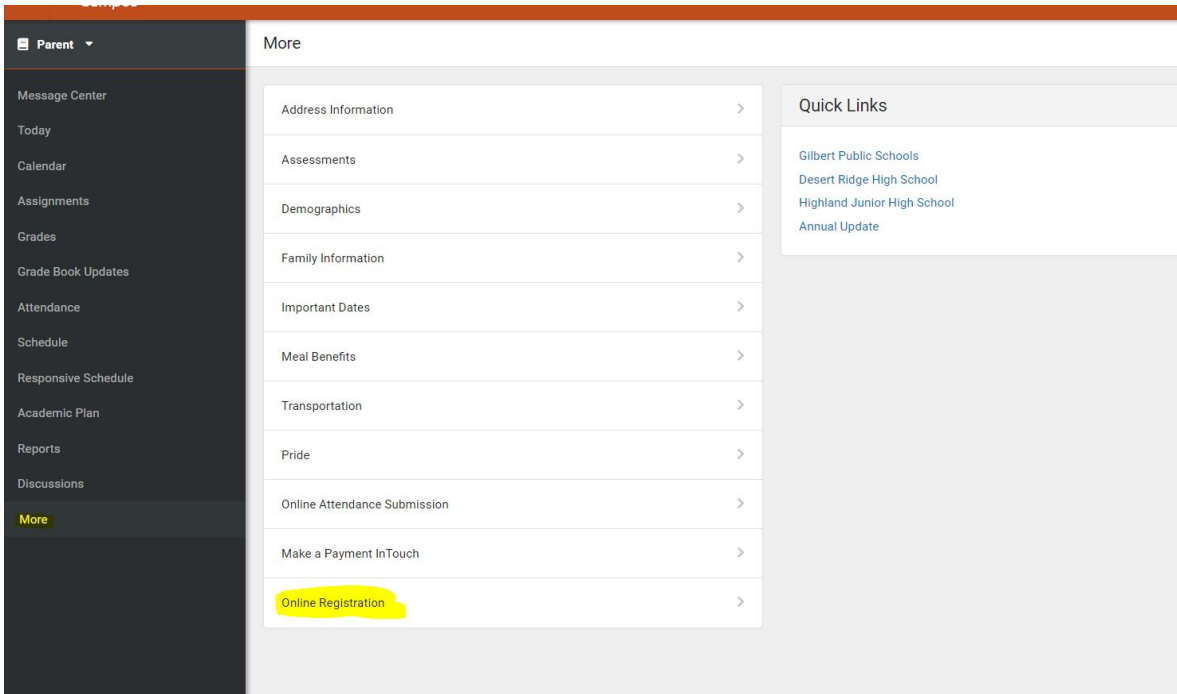
Or

Click the More option. Then under the Quick Links area, click Annual Update.



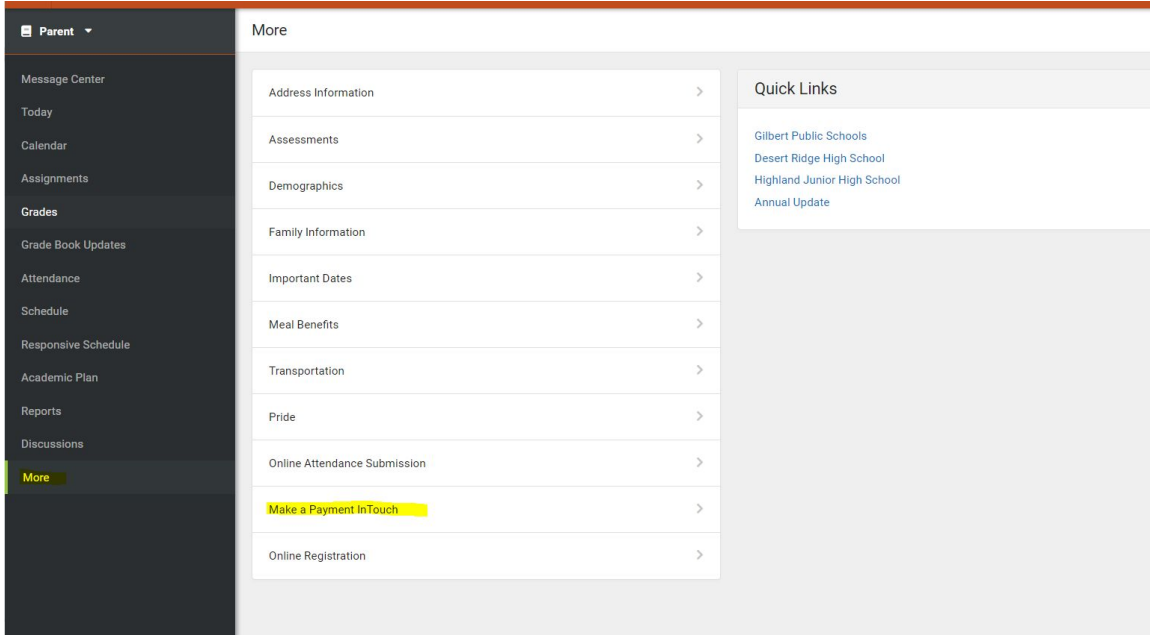
How to Access Online Registration

Click the More option, then click Online Registration.



How to Make a Payment in InTouch

Click the More option, then click Make a Payment InTouch



You will then be redirected to the InTouch site.